

Opportunità di finanziamento per le Scienze socio-economiche umanistiche in Horizon 2020

Margot Bezzi

bezzi@apre.it

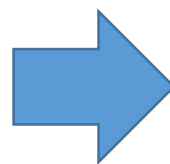
SSH Integration in H2020

Il processo di SSH integration, ed esempi di progetti



**A programme
dedicated to SSH. Vertical
approach.**

No reference to disciplines
working together in the
evaluation criteria



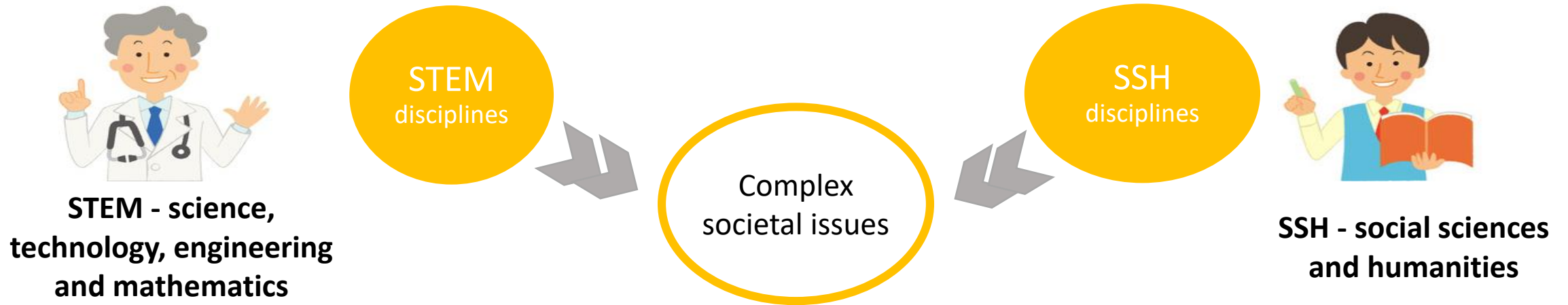
**SSH is a
cross-cutting issue**

*Transdisciplinarity is
part of the evaluation
criteria*

"Social sciences and humanities research will be fully integrated into each of the priorities of Horizon 2020 and each of its specific objectives (...) so that the SSH can make a contribution wherever they are needed."

Horizon 2020 Framework Regulation

Why are the SSH disciplines integrated?



- Solutions and products that are socially acceptable, directly applicable or marketable
- Investigating complexity and develop deep context understanding in matter of complex issues.
- Support evidence-based policymaking

Challenges: change of mindset and approach

How a half-educated tech elite delivered us into chaos

John Naughton

International edition
The Guardian

If our supersmart tech leaders knew a bit more about history or philosophy we wouldn't be in the mess we're in now



▲ Oh, the humanities: Donald Trump meeting PayPal co-founder Peter Thiel and Apple CEO Tim Cook in December last year. Photograph: Evan Vucci/AP

One of the biggest puzzles about our current predicament with fake news and the weaponisation of social media is why the folks who built this technology are so taken aback by what has happened. Exhibit A is the founder of Facebook, **Mark Zuckerberg**, whose political education I recently chronicled. But he's not alone. In fact I'd say he is quite representative of many of the biggest movers and shakers in the tech

La pervasività della tecnologia e della comunicazione ci pone domande che non possono essere risposte da tecnici.

La tecnologia, il digitale e la comunicazione sono il mondo e il modo in cui costruiamo

- identità e il senso di appartenenza,
- Legami di fiducia,
- sistema di valori e riferimento,
- immaginario collettivo
- percezione e rappresentazione dei fenomeni
- modelli di comportamento
- Connessioni tra sistemi e ecosistemi maggiori dell'individuo...



IMMAGINARE

LIBRI

Tecnologia contro umanità: come ripensare l'uomo nel mondo post-umano

Il libro di Gerd Leonhard pone la necessità di una riflessione etica sul futuro degli uomini nella relazione con robot sempre più pervasivi e invadenti. E ci ricorda che sono gli ultimi momenti in cui avremo tempo per farlo

di **Redazione**
19 gennaio 2018

HUMAN CAPITAL DIGITAL TRANSFORMATION



«Abbiamo sempre più bisogno di figure ibride, di profili curriculari che sappiano tenere insieme immaginazione e razionalità, creatività e rigore metodologico, l'umano e il tecnologico. È la complessità del mutamento in atto»

*"Now is the time - and, as Leonhard never tires to remind us, "the last chance" - to join the dots between big data and digital ethics, to start discussing the moral framework required to steer the evolution of digital life, to **bridge the gap between what technology can do (more or less anything, it would seem) and what it should do to achieve human happiness**, and to reflect once again on what makes human beings unique. In short, to rethink the role of humanity in the post-human world."*

Morning FUTURE

ORIENTARE ISPIRARE IMMAGINARE

IT EN

ASCOLTA

ORIENTARE

INTERVISTA

La società ipertecnologica? Non ha bisogno di tecnici, ma di ibridi

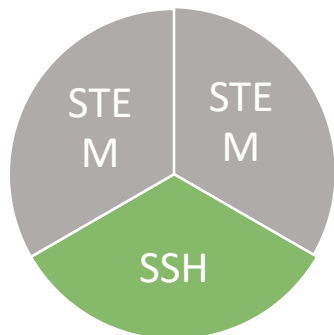
Servono manager della complessità, capaci di abitare i confini tra i saperi, traendone opportunità. Intervista a Piero Dominici, docente di Comunicazione pubblica e Attività di Intelligence all'Università degli Studi di Perugia

di **Redazione**
16 febbraio 2018

FUTURO DEL LAVORO FORMAZIONE

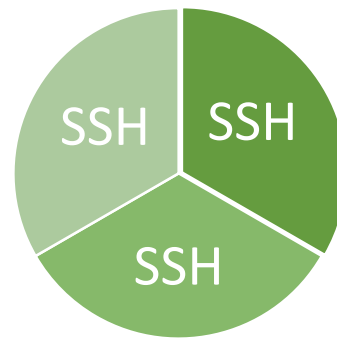
f G+ in t e

Social Science and Humanities in H2020



Topics with an SSH component

- Multidisciplinary topics where finding a solution requires knowledge and input from **both SSH and STEM**
- Consortia submitting proposals will need to include both STEM and SSH partners



Topics dedicated to SSH

- Finding a solution relies on knowledge and input from SSH researchers and practitioners
- Consortia submitting proposals will **mainly** consist of partners from various **SSH** disciplines

What do we mean by Social Science and Humanities?



**Human behaviour and choices,
lifestyles and well-being**



**Human geography and
demographic trends**



Historical considerations



**Economic analysis and business
models**



**Legal, institutional and political
frameworks**



Variations across social groups



**Cultural and
anthropological aspects**



Social innovation

The Commission publishes regularly Monitoring Reports on the integration of SSH in Horizon 2020



INTEGRATION OF SOCIAL SCIENCES AND HUMANITIES IN HORIZON 2020: PARTICIPANTS, BUDGET AND DISCIPLINES

Monitoring report on SSH-flagged projects funded in 2014 under the Societal Challenges and Industrial Leadership



2014 report published on 11 February 2016
[Link](#) to EU Bookshop



INTEGRATION OF SOCIAL SCIENCES AND HUMANITIES IN HORIZON 2020: PARTICIPANTS, BUDGET AND DISCIPLINES

2nd Monitoring report on SSH-flagged projects funded in 2015 under the Societal Challenges and Industrial Leadership priorities



2015 report published on 31 January 2017
[Link](#) to EU Bookshop



Integration of **Social Sciences** and **Humanities** in Horizon 2020: Participants, Budget and Disciplines

3rd Monitoring report on SSH flagged projects funded in 2016 under the Societal Challenges and Industrial Leadership priorities



Research and Innovation

SSH disciplines represented

Discipline prevalence in projects funded under SSH flagged topics		
Disciplines and clusters of disciplines	Number of projects that include partner-level expertise	Share of projects that include partner-level expertise
Economics	904	34%
Political Science, Public Administration	344	13%
Non research activities	293	11%
Sociology	222	8%
Business/Marketing	216	8%
Human geography	159	6%
Communication	108	4%
Psychology	96	4%
Humanities/Arts	95	4%
Law	91	3%
Education	84	3%
History	46	2%
Anthropology/ Ethnology	17	1%
Demography	1	0,04%

Quality of integration

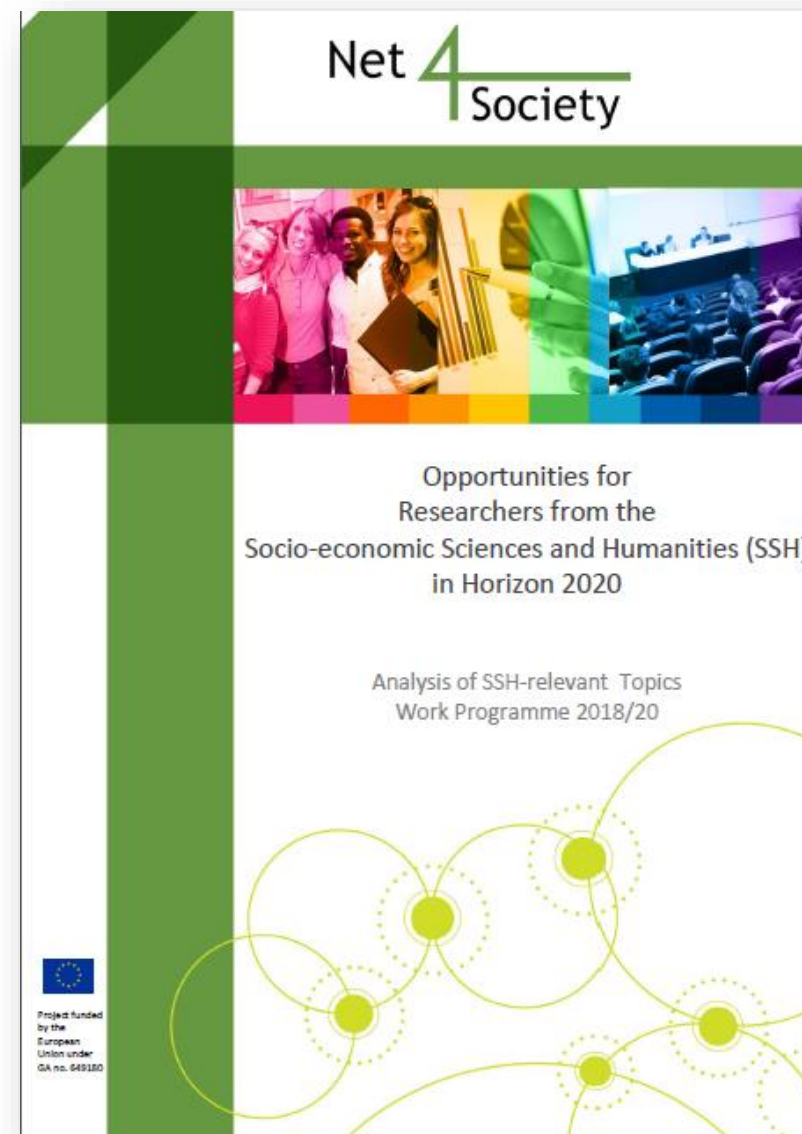
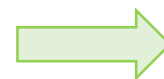
- 49% of projects funded under topics flagged for SSH show good integration of SSH in terms of share of partners, budget allocated to them, person-months, and variety of disciplines involved.
- However, at the other end of the spectrum, 29% of the projects funded under topics flagged for SSH do not integrate any contributions from SSH.
- When excluding Societal Challenge 6, the share of projects that fail to integrate contributions from the SSH increases from 29% to 33% while the share of projects with good SSH integration decreases from 49% to 42%.

SSH-flagged topics

Topics throughout H2020 are flagged as relevant for SSH if expertise under these disciplines is needed to address the research/innovation questions.

Opportunity Researchers from SSH in H2020. Analysis curated by the NCP Network on Societal Challenge 6.

<http://www.net4society.eu/public/ssh-opportunities.php>



Percentage of topics flagged for SSH in Work Programme 2018-20

2018 and 2019 topics

- The percentage of topics flagged for SSH in Horizon 2020 is increasing (in the Societal Challenges and Industrial leadership/LEITs pillar)
- In Work Programme 2014-15 it was 37% on average and in WP 2016-17 it increased to 41%
- The numbers for WP 2018-20 are still not official, but it is likely that it might be around 43%
- For 2018 and 2019 especially SC2 and SC5 have increased the share of SSH flagged topics in their WP part - the LEITs pillar still has less topics with SSH flags

Integration of SSH in Horizon 2020

State of play

The percentage of topics flagged for SSH is gradually rising

The situation with the humanities and some social sciences being less involved still persists

Large differences within some WP parts regarding budget, flags, number of SSH partners - from one year to the next

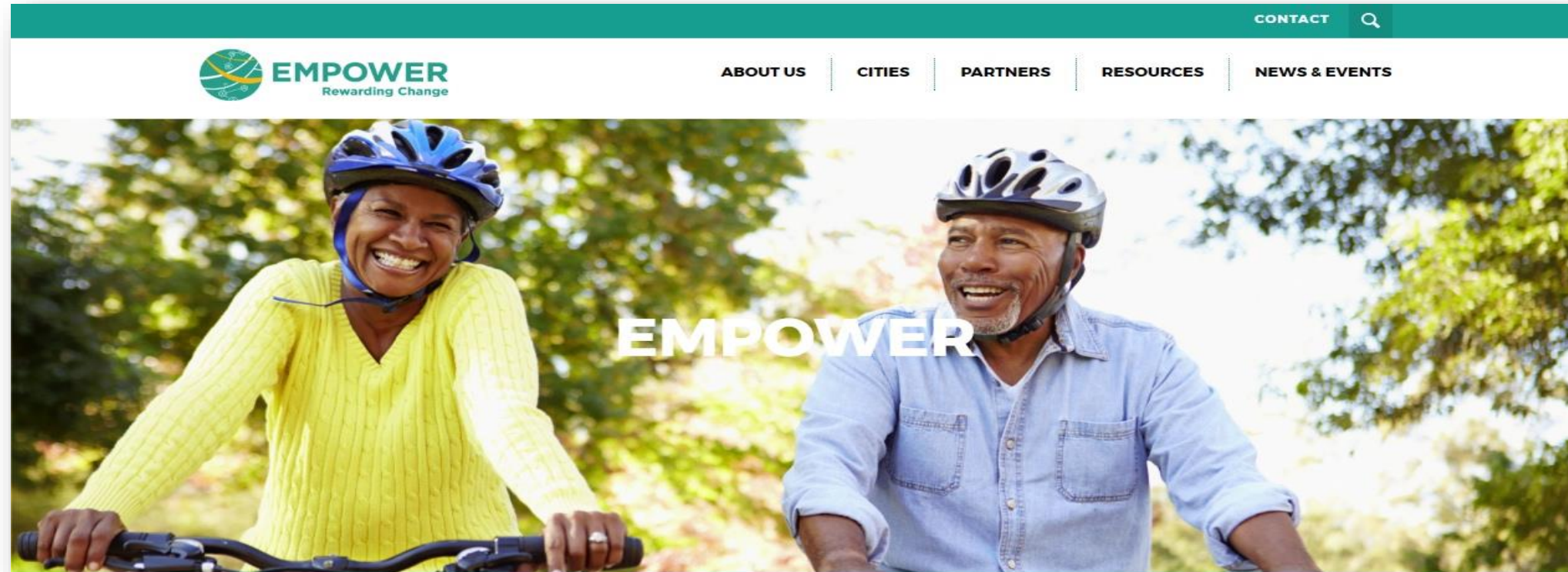
Actions to take:

- continue the efforts towards more interdisciplinarity
- open up topics to underrepresented SSH disciplines
- further strengthen communication activities to facilitate that more SSH and STEM partners address challenges together



Progetti

EMPOWER



Goal: to reduce the use of conventionally-fuelled vehicles (CFV) in cities integrating technological and **socio-economic approaches**.

<http://empowerproject.eu/>

EMPOWER

Empowering a reduction in use of conventionally-fuelled vehicles

Type of action: RIA

Call: Mobility for Growth

WP Part: SC4 Transport

- Create a set of tools for the transport industry and policy-makers. These tools will empower them to understand, choose and implement **evidence-based and cost-effective policy interventions and changes in infrastructure**, i.e. shifting to other transport modes and vehicle types, promoting sharing and self-organisation in users.
- The project brings together transport engineers and infrastructure specialists, **cognitive psychologists, economists, specialists in traffic behaviour and organisational psychology**.



This project has received funding from the European Union's Horizon 2020 research and innovation programme - Societal Challenge 1 (DG CONNECT/H) under grant agreement No 643647

Home
GrowMeUp

Dissemination

Partners

News

Media Material

« Join our community »

Workshops

Login

search...



FUTURIS

Read More

How robots can enhance the lives of Europe's elderly citizens

The GrowMeUp project



Social links



GrowMeUp

Type of action: RIA

WP Part: SC1 Health, Demographic Change and Wellbeing

Call: Personalised Healthcare

Topic: PHC-19-2014 Advancing active and healthy ageing with ICT: service robotics within assisted living environments

GrowMeUp is coordinated by the University of Coimbra and include a consortium formed by eight partners from 6 EU countries: Portugal, Switzerland, the Netherlands, Cyprus, Spain and France.

The GrowMeUp Project aims to provide an answer to the **demographic change** challenge, by providing an affordable service robotic system able to learn the older persons needs and **habits** over time and enhance ('grow up'/scale up) its functionality to compensate for the elder's degradation of abilities, to support, encourage and engage the older persons to stay longer active, **independent and socially involved**, in carrying out their daily life at home.

Behavioural science, social sciences, elderly care and support



INCREASING SOCIAL AWARENESS AND ACCEPTANCE OF BIOGAS AND BIOMETHANE

aumentare la consapevolezza e l'accettazione sociale
del biogas e del biometano

IL PROGETTO ISAAC

Sebbene l'Italia sia il secondo produttore di biogas europeo dopo la Germania, ha ancora un grande potenziale inespresso di produzione ed espansione del relativo mercato, soprattutto nelle regioni centro-meridionali.

Secondo le elaborazioni del CIB - Consorzio Italiano Biogas e Gassificazione (basate sul rapporto annuale 2015 del GSE - Gestore dei Servizi Energetici), sono più di 1550 gli impianti installati con una potenza totale di circa 1160 MWel, ma le barriere non tecnologiche, che ne impediscono una maggiore diffusione, rappresentano ancora una pesante criticità.

ISAAC è un progetto finanziato dal programma europeo Horizon 2020, all'interno della Call for Competitive Low-Carbon Energy, iniziato a gennaio 2016 e che terminerà a giugno 2018, con l'obiettivo di favorire e supportare lo sviluppo del settore del biogas in Italia e in Europa.

Lo scopo di ISAAC è la rimozione delle barriere non tecnologiche per favorire la diffusione del biogas/biometano nel mercato italiano e rendere più semplice la realizzazione degli impianti.





SOCIALI

Mancanza di informazione tra cittadini, agricoltori e allevatori

-

Sindrome NIMBY

-

Mancanza di interazione tra i diversi stakeholder

-

Riluttanza degli agricoltori, specialmente nel sud Italia, a **cooperare** nella gestione di impianti per la produzione di energia



ECONOMICHE

Mancanza di specifici ed efficaci schemi di finanziamento

-

Bassa redditività dei piccoli impianti a biogas e **incertezza** sugli incentivi futuri



LEGISLATIVE

Mancanza di una legislazione nazionale chiara sull'immissione in rete del biometano e sull'uso del digestato

-

Frammentazione e molteplicità di quadri normativi su autorizzazioni e procedure di installazione

LE BARRIERE NON TECNOLOGICHE

Processi partecipativi in due territori pilota
(interessati alla realizzazione di impianti a biogas)
Campagne informative in sette regioni italiane
Incontri pubblici con esperti per confronti aperti

Utilizzo di uno strumento di calcolo per valutare la disponibilità di biomassa
residuale e definire il potenziale di produzione di biogas/biometano

Utilizzo di forme di finanziamento innovative
(come il crowdfunding) per la creazione di nuove opportunità
Studi socio-economici sullo sviluppo, gli impatti e l'accettabilità
degli impianti a biogas e biometano in territori specifici

Proposte legislative a livello nazionale sui
processi partecipativi legati a politiche energetiche locali
Tavoli tecnici per la corretta interpretazione della legislazione nazionale
su temi quali sottoprodotti/co-prodotti/rifiuti
Miglioramento dell'attuale legislazione italiana sull'utilizzo del biometano
Corsi di formazione per tecnici comunali e regionali

L'APPROCCIO DI ISAAC PER SUPERARLE

ISAAC

Increasing social awareness and acceptance of biogas and biomethane

Type of action: CSA

Call: LCE-14-2015: Market uptake of existing and emerging sustainable bioenergy

WP Part: SC3 Energy

- main aim is to remove non-technical barriers, such as lack of public acceptance and coordination for the biogas facilities diffusion, normative and legislative inadequacies, in order to support biogas/biomethane market penetration in Italy and make plants implementation easier within the national context.
- Actions will be focused on spreading balanced information on the biogas production process and related environmental and economic benefits among the stakeholders potentially involved in the construction of plants.
- The analysis of biogas production potential from residual biomass will constitute the starting point for communication and information activities.

ROUTE to PA

Type of action: IA

WP Part: SC6

ROUTE-TO-PA is a multidisciplinary innovation project, that, by combining expertise and research in the fields of **e-government, computer science, learning science and economy.**

Aiming at improving the impact, towards citizens and within society, of ICT-based technology platforms for transparency.

ROUTE-TO-PA envisions that ICT for Transparency must **improve the engagement of citizens by making them able to socially interact over open data**, by forming or joining existing online communities that share common interest and discuss common issues of relevance to local policy, service delivery, and regulation.

2. Team: multidisciplinarietà

Computer Science, E-Government, Political Science, Psychology, Economy

Research

- Università di Salerno (Italy)
- CNRS (France)
- Wise&Munro (The Netherlands)
- National University of Galway (Ireland)
- Warsaw School of Economics (Poland)
- University of Utrecht (The Netherlands)

Companies

- Ancitel SpA (Italy)
- Ortelio Ltd (United Kingdom)

Stakeholders:

- Dublin Town Council (Ireland)
- The Hague Town Council (The Netherlands)
- Comune di Prato (Italy)
- Open Knowledge Foundation (United Kingdom)



multidisciplinarietà

Research
Outreach
Socio-economic
Places

Archaeology
Hydrology
Agronomy
Botany
Ethnography
Pedology

Research

Main objective 1

Investigate the logic that rules the process of historical landscapes formation in a framework. Introduce the historical perspective (4th dimension), which we consider in our studies:

- Conduct a specific historical and archaeological study in the four Mediterranean mountain landscapes of: Sierra Nevada (Granada-Almería, Spain), Monti di Trapani (Trapani, Italy), Colli Euganei (Padova, Italy), Vjosa Valley (Albania).
- Quantitatively assess the long-term historical uses of water and soils in the study areas. Analysis of agrosystem (crops and livestock), via the collection and examination (archaeological fieldwork and ethnographic surveys) of the historical remains remained fossilised in the landscape.
- Comparative study of the four sample-areas in order to unveil their commonalities and differences.
- Analysis of the productivity and resource use efficiency in the four historic sample-areas, through agronomic and resource-management models, taking into account the global climate change, and the EU policies and strategies (Landscape Convention, European water policy, Common Agricultural Policy, Joint Programming Initiative (JPI) on Water and Global Change).

Research
Design
Stimulate
Apply

STRENGTH2FOOD

Esempio di progetto multi-actor



HOME

ABOUT

PARTNERS

RESEARCH

PUBLICATIONS

RESOURCES

NEWS

CONTACT





Strengthening European Food Chain Sustainability by Quality and Procurement Policy

SC2 - Sfida sociale 2 “Sicurezza alimentare, agricoltura e silvicoltura sostenibile, ricerca marina e marittima e sulle acque interne nonché bioeconomia”

Obiettivo: valutare l’impatto, facilitare lo scambio di conoscenza e informare gli attori politici in tema di filiera alimentare sostenibile grazie ad un gruppo di ricerca interdisciplinare.

- Multi-actor approach
- Misurare l’impatto economico, ambientale e sociale



Consortium

Team interdisciplinari

Ente SSH
Ente multidisciplinare





Strengthening European Food Chain Sustainability by Quality and Procurement Policy

Alcuni partner coinvolti

L'Università degli Studi di Milano ha il ruolo di condurre una valutazione dell'**impatto economico** sugli effetti dei regimi di qualità dell'UE (DOP / IGP) sui flussi commerciali internazionali.

L'Università degli Studi di Parma è coinvolta nel progetto con **tre diversi tipi di competenze** provenienti dai Dipartimenti di **Economia**, Dipartimento di **Scienze Chimiche**, della Vita e della Sostenibilità Ambientale e il Dipartimento di **Scienze degli Alimenti** e del Farmaco.



Societal Challenge 6: *Inclusive, Innovative and Reflective Societies*

I bandi del Programma di lavoro 2018-2020



Excellent Science

- **European Research Council**
 - Frontier research by the best individual teams
- **Future and Emerging Technologies**
 - Collaborative research to open new fields of innovation
- **Marie Skłodowska Curie actions**
 - Opportunities for training and career development
- **Research infrastructures** (including e-infrastructure)
 - Ensuring access to world-class facilities

Industrial Technologies

- **Leadership in enabling and industrial technologies**
 - ICT, nanotechnologies, materials, biotechnology, manufacturing, space
 - **Access to risk finance**
 - Leveraging private finance and venture capital for research and innovation
 - **Innovation in SMEs**
 - Fostering all forms of innovation in all types of SMEs
- 

Societal Challenges

- Health, demographic change and wellbeing
 - Food security, sustainable agriculture, marine and maritime research & the bioeconomy
 - Secure, clean and efficient energy
 - Smart, green and integrated transport
 - Climate action, resource efficiency and raw materials
 - **Inclusive, innovative and reflective societies**
 - Security society
- 

Specific objective of Societal challenge 'Europe in a changing world - Inclusive, innovative and reflective societies

*“...**foster a greater understanding of Europe**, provide solutions and support inclusive, innovative and reflective European societies in a **context of unprecedented transformations and growing global interdependencies**”*

*“to **support social sciences and humanities research...**” [which] “is needed to **understand identity and belonging** across communities, regions and nations.*

*Research will support policymakers in designing policies that **foster employment, combat poverty and prevent the development of various forms of divisions, conflict and political and social exclusion, discrimination and inequalities**, such as gender and intergenerational inequalities, discrimination due to disability or ethnic origin, or digital or innovation divides, **in European societies and in other regions of the world...**”*

(Extracts from the Regulation establishing Horizon 2020)



Structure of Societal Challenge 6

Inclusive Societies

- Building resilience after the crisis; reversing inequalities; integrating the young generation.
- Sustainable and inclusive environments through innovative spatial and urban planning

Innovative societies

- New forms of innovation, incl. social innovation, creativity and co-creation
- New and untapped forms of growth, beyond GDP
- Strengthening the evidence-base and support for the IU and ERA

Reflective societies

- European heritage (memory and identity creation; cultural heritage)
- European countries' and regions' history
- Europe's role as a global actor; Cooperation and intercultural relations with third countries

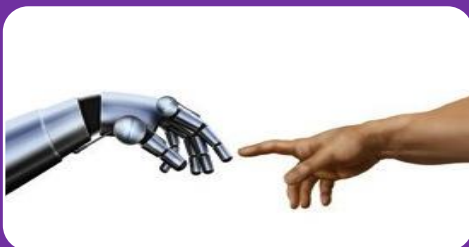


Structure of Societal Challenge 6

Linee di ricerca 2018-20



Migration



Socio-Economic and Cultural transformations in the context of the Fourth Industrial Revolution



Governance for the future

SC6 2018 - 2020

- **3 calls**

A decrease in number of calls:

- 2018-2020 – 3 calls
- 2016/17 - 4 calls
- 2014/15 - 5 calls

- **Budget breakdown for calls 2018-2020**

	2018	2019	2020
Call 1 Migration	36	35	40
Call 2 Transformation	48.5	55.4	63
Call 3 Governance	40.5	53.5	55

Drivers

1. **Migration** (flows, narratives, integration, lessons from the past, cities)
1. **Human and social dynamics of the 4th industrial revolution** (blurred lines between physical and technological, societal challenges and impacts, creative industries and cultural heritage)
2. **Governance for the future** (trust & legitimacy, legal framework, historical and cultural evolution of governance, multi-level governance)



Migration

Linee di ricerca 2018-20



About: the international and internal dynamics of global migration, and its governance

Contributes: to the UN Agenda 2030 and in particular SDGs 4, 10 and 11

- Migration **governance**, asylum systems, and **response** capacity: designing **future** strategies; **comparative** studies.
- **Understanding** human mobility **patterns**: root causes, development, geopolitical projections
- **Understanding** the **impact** on EU societies: labour market and employability culture, and role of local/urban communities
- **Integrating** migrants: shaping past and present **narratives**; **ICT** solutions for inclusion; addressing challenges for migrant **children**



Migration

TOPIC

1. Understanding migration mobility patterns: elaborating mid and long-term migration scenarios (RIA)
2. Towards forward looking migration governance: addressing the challenges, assessing capacities and designing future strategies (RIA)
3. Mapping and synthesizing knowledge on the complex relationship between the governance of legal migration and the existence and growth of irregular migration flows
4. Social and economic effects of migration in Europe and integration policies (RIA)
5. Mapping and overcoming integration challenges for migrant children (RIA)
6. Addressing the challenge of migrant integration through ICT-enabled solutions
7. International protection of refugees in a comparative perspective (RIA)
8. Addressing the challenge of forced displacement (RIA)



Socio-Economic and Cultural transformations in the context of the Fourth Industrial Revolution

Linee di ricerca 2018-20



About: the socioeconomic and cultural origins and effects in Europe of the 'fourth industrial revolution'

Contributes: to the objectives and the legacy of the European Year of Cultural Heritage 2018 and to the UN's Sustainable Development Goals (SDGs).

- Socio-economic effects of **technological transformations**; new forms of **human-technology interaction**;
- The future of **labour** market, competitiveness and **welfare**
- Innovative **public services**; innovative urban environments; **city-platform** and **citizen-driven innovation**;
social innovation
- Understanding economic **growth** and **productivity** in a context of transformations
- **Creative** industries, the **art** and **cultural** policies
- **Cultural heritage**: protection of cultural heritage; digitisation; impact on social cohesion (EU values and symbols)



Governance for the future

Linee di ricerca 2018-20



About: to provide the evidence base, sound policy & technological options to facilitate adaptation of governance structures if and as needed

Contributes: open innovation, security and defence policy, digital democracy and also the delivery of public goods

- **Evolution of public governance:** differences in European governance; scenarios of **global governance**;
- **Trust** in governance; raise of **populism**; extreme **ideologies** and **polarisation**; violent **extremism** in MENA regions and Balkans.
- **Social rights**, democracy, **citizenship**, democratic engagement.
- **Digital transformation** of governance and **public services**: new forms of delivering public goods; cloud infrastructure for PA.
- **Digitalisation** and European **culture**: IPR, copyrights and challenges for creativity
- Inter-disciplinarity and SSH integration



Governance for the future

TOPIC

1. Trust in governance (RIA)
2. Past, present and future of differentiation in European governance (RIA/CSA)
3. Addressing populism and boosting civic and democratic engagement (RIA)
4. Enhancing social rights and EU citizenship (RIA)
5. New forms of delivering public goods and inclusive public services (RIA/CSA)
6. Trends and forward-looking scenarios in global governance (RIA)
7. The Common Foreign and Security Policy and the expanding scope of the EU's external engagement (RIA)
8. Partnering for viability assessments of innovative solutions for market outside Europe
9. Drivers and contexts of violent extremism in the broader MENA region and the Balkans (RIA)
10. Extreme ideologies and polarisation (CSA)
11. Pilot on using the European cloud infrastructure for public administrations (IA)
12. Digitisation, Digital Single Market and European culture: new challenges for creativity, IPR and copyright (RIA)
13. ERA-Net CO-FUND - Renegotiating democratic governance in a time of disruptions
14. Taking lessons from the practices of interdisciplinarity in Europe

«Focus areas» presenti in SC6

Digitising and transforming European industry and services (DT):

- Integrazione degli immigrati tramite soluzioni ICT
- Impatto delle nuove tecnologie sulla PA
- Impatto trasformazioni tecnologiche sui giovani
- Approcci collaborativi al patrimonio culturale per favorire coesione sociale
- Cura degli asset digitali e digitalizzazione
- Nuovi modi di fornire servizi pubblici e di renderli più inclusivi
- Digitalizzazione e cultura

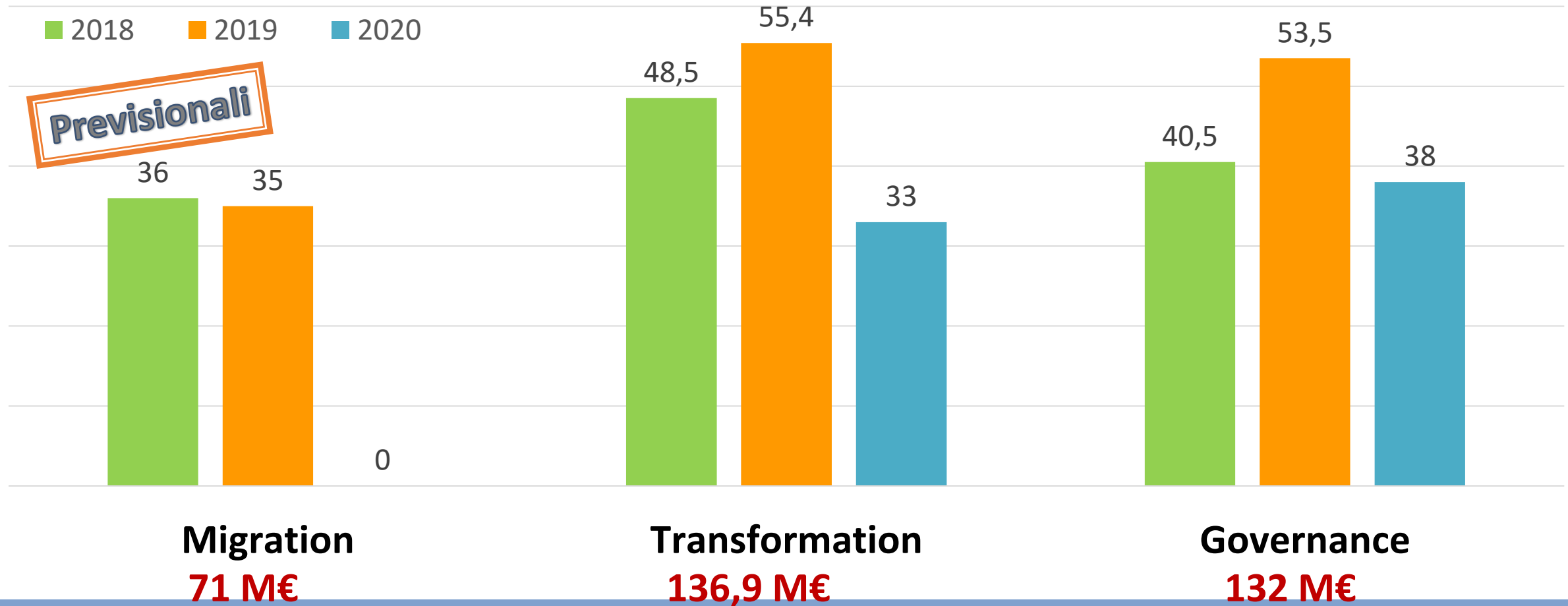
Boosting the effectiveness of the Security Union (SU):

- Patrimonio culturale a rischio e traffici illegali
- Estremismi e radicalismi ai confini
- Politica di sicurezza europea e ampliamento dell' Unione
- Ideologie e polarizzazione

Tempi di pubblicazione e le scadenze

Call	2018		2019		2020
	Opening	Deadline	Opening	Deadline	
1 MIGRATION	7 Nov 2017	13 Mar 2018	6 Nov 2018	14 Mar 2019	<i>To be defined</i>
2 TRANSFORMATIONs - SOCIOECONOMIC AND CULTURAL TRANSFORMATIONS IN THE CONTEXT OF THE FOURTH INDUSTRIAL REVOLUTION	7 Nov 2017	13 Mar 2018	6 Nov 2018	14 Mar 2019	
3 GOVERNANCE - GOVERNANCE FOR THE FUTURE	7 Nov 2017	13 Mar 2018	6 Nov 2018	14 Mar 2019	

Distribuzione budget 2018-2020 (M€)



Programma di lavoro

<https://ec.europa.eu/programmes/horizon2020/en/what-work-programme>

EN

Annex 16

Horizon 2020

Work Programme 2018-2020

Draft

*13. Europe in a changing world – Inclusive, innovative and
reflective societies*

DISCLAIMER

This draft has not been adopted or endorsed by the European Commission. Any views expressed are the preliminary views of the Commission services and may not in any circumstances be regarded as stating an official position of the Commission. The information transmitted is intended only for the Member State or entity to which it is addressed for discussions and may contain confidential and/or privileged material.

Le opportunità per SSH negli altri programmi di lavoro



Excellent Science

- **European Research Council**
 - Frontier research by the best individual teams
- **Future and Emerging Technologies**
 - Collaborative research to open new fields of innovation
- **Marie Skłodowska Curie actions**
 - Opportunities for training and career development
- **Research infrastructures** (including e-infrastructure)
 - Ensuring access to world-class facilities

Industrial Technologies

- **Leadership in enabling and industrial technologies**
 - ICT, nanotechnologies, materials, biotechnology, manufacturing, space
 - **Access to risk finance**
 - Leveraging private finance and venture capital for research and innovation
 - **Innovation in SMEs**
 - Fostering all forms of innovation in all types of SMEs
- 

Societal Challenges

- Health, demographic change and wellbeing
 - Food security, sustainable agriculture, marine and maritime research & the bioeconomy
 - Secure, clean and efficient energy
 - Smart, green and integrated transport
 - Climate action, resource efficiency and raw materials
 - Inclusive, innovative and reflective societies
 - Security society
- 



HEALTH (SC1)

SC1-BHC-22-2019: Mental health in the workplace

In most European countries, absences from work and early retirement due to mental illness have increased in recent years. Mental health conditions such as depression, anxiety and stress represent substantial financial costs for employers and employees, as well as a significant loss for society at large.

- Research should be **multidisciplinary**,
- including **social sciences and the humanities**.
- The **stigma** attached to mental ill health is important to consider as well as other **social and cultural factors** which may be relevant to improving the working environment.
- **Mixed-methods research** is encouraged.
- Proposals should **involve key partners** such as employers and employees in the private and public sector, policy makers, insurers, social partners and civil society in developing initiatives.
- Proposals should address relevant **gender** issues (e.g. gender equality at the workplace).
- **Ethics** and data protection aspects should be addressed where they are relevant.



FOOD (SC2)

RUR-02-2018: Socio-economic impacts of digitisation of agriculture and rural areas

Proposals shall analyse the **social and economic impacts** of digitisation on agriculture and rural areas, looking into costs, benefits and possible trade-offs. Analyses shall distinguish the diversity of agricultural sub-sectors or farming systems and other activities in rural areas, including forest operations. They must cover a representative set of different rural contexts that exist across the EU, analysing the impact of the various policy settings. They shall **fill knowledge gaps** on the impacts of digitisation on agriculture and rural areas regarding at least:

- **employment and quality of life**,
- functioning of **markets** and value chains,
- competitiveness and scalable opportunities for agricultural and rural **businesses**
- and (re)deployment of **public services**.

Beyond the impacts of past and ongoing developments, the action shall explore future scenarios for digitisation in the coming decades, characterising drivers and barriers which are likely to accelerate or hamper their respective development, as well as their respective impacts.



FOOD (SC2)

CE-SFS-24-2019: Innovative and citizen-driven food system approaches in cities

Research and (open) innovation co-created with citizens are part of broader city-region food system approaches. Such initiatives stimulate the development of cities as innovative food hubs. Nevertheless, there are barriers to the application and demonstration of systemic food-related innovative approaches

- **Proposals shall identify several food-related innovative approaches based on citizen science and engagement**, to be practised in cities to foster sustainability of the food system.
- **Proposals shall include the development of a classification and assessment of the benefits (economic, environmental and societal) of existing approaches.**
- **Proposals shall also include co-creation between social innovation and technological innovation.** Following the RRI principles, proposals will ensure that societal actors work together during the whole research and innovation process in order to better align both the process and its outcomes with the values, needs and expectations of society. Active participation of municipalities and SMEs is strongly encouraged.



ENERGY (SC3)

• **LC-SC3-EE-4-2019-2020: Upgrading smartness of existing buildings through innovations for legacy equipment**

Today in the EU, the existing building stock represents the main challenge for a more efficient energy use, in buildings as well as across the whole energy system.

- **Proposals should develop and demonstrate cost -effective technological solutions** to manage energy within existing buildings and interact with the grid providing energy efficiency, flexibility, generation and storage, **based on user preferences and requests.**
- **Proposals are expected to include clear business model development and a clear path to finance and deployment.**
- Key partners should have the capability and interest in making the developed solution a core part of their business/service model to their clients.
- **Besides the pilot demonstrations, proposals should outline business models and strategies for the broad uptake of the proposed smart systems into specific building typologies in Europe and their integration with evolving electricity markets, e.g. dynamic pricing or other services and information offered by energy suppliers and/or aggregators.**
- Integrations with other energy networks (e.g. DHC) can also be considered.



ENERGY (SC3)

LC-SC3-EE-14-2018-2019-2020 - Socio-economic research conceptualising and modelling energy efficiency and energy demand

Scope: **2018**

The research projects should help to **make the Energy Efficiency First principle more concrete** and operational and to better understand its relevance for **energy demand and supply** and its broader impacts across sectors and markets. In particular, it needs to be analysed how energy efficiency programmes along the efficiency chain, i.e. end-use, operation, transmission and generation/utilisation of resources, can compete in reality with supply side investments (e.g. additional generation capacities or import capacities) including at the level of countries and having in mind limited public budgets. It would also be necessary to describe and assess how it interacts with and correlates to other policy objectives, at a **policy level** as well as at the level of implementation.

Actions which conceptualise and assess the impacts and model the energy efficiency first principle, in particular as regards:

- ☐ its role and value in the energy system (e.g. for planning of generation assets and networks adequacy etc.) and the energy market (participation in capacity market, participation and impact on prices and costs on wholesale and balancing/reserve markets);
- ☐ its role and value in financing decisions (considering as well that in some Member States retail prices do not reflect real costs);
- ☐ **its economic and social impacts;**
- ☐ its correlation and interaction with other **policy** objectives (e.g. renewable energy, demand response);
- ☐ existing best practices worldwide where energy efficiency projects are given priority over additional supply side measures



ENVIRONMENT (SC5)

LC-CLA-05-2019 - Human dynamics of climate change

Specific Challenge

[...] As climatic changes increasingly place populations under pressure, human beings are already adapting. However, less developed countries – particularly in Africa – are often less resilient to climate changeIt is important to make use of the wealth of **available socio-economic and geophysical data** to better understand these patterns in order to develop appropriate policy responses.

b) **Climate and human migration:** Actions should identify and analyse drivers relating to climate change that may affect human migration and displacement patterns. Actions should – using a **multidisciplinary approach** – identify and describe climate parameters, develop analytical methodologies, and demonstrate how these relate to human migration patterns, including the probability of migration/forced displacement and design adaptation solutions that may help in alleviating migration pressures at the source. They should also provide guidelines and policy recommendations for the European Agenda on Migration. Actions may also harness local knowledge and information by engaging with civil society organisations and citizen groups.

The participation of social sciences and humanities disciplines is encouraged to address the complex challenges of this topic, including challenges associated with relevant gender issues.



TRASPORTI (SC4)

MG-4-1-2018: New regulatory frameworks to enable effective deployment of emerging technologies and business/operating models for all transport modes

Scope: Proposals should address several or all of the following:

- ☐ Identification of new technologies, services, business and operating models and mobility solutions (including social innovations) having the potential to disrupt and overhaul the **current regulatory approaches** in both passenger and freight transport;
 - ☐ Comparative evidence based analysis of different regulatory responses and governance models (both in terms of existing and forthcoming solutions) to disruptive transport technologies and business/operating models across the EU and beyond, identification of best practices and lessons learned;
 - ☐ Analysis of the main **economic**, **political** and **social** (e.g **demographic**, **cultural** and **historical**) variables influencing the regulatory responses;
 - ☐ Identification of the necessary characteristics of **regulatory approaches/frameworks** and governance models that can accommodate disruptive innovation without compromising on the adequate level of protection with regard to security (including cybersecurity), safety, data protection, social protection, and which can contribute to a sustainable model of public infrastructure use.
- Analysis of issues of cooperation among public and private parties, in both mandatory and non-mandatory situations as well as data exchange, governance and communication.



NMBP (2019)

BIOTEC-02-**2019**: Boosting the efficiency of photosynthesis (RIA)

Proposals should work towards the optimisation of photosynthesis by capitalising on multidisciplinary approaches, such as functional genomics, systems biology, metabolic modelling, enzyme engineering, computational biology, synthetic biology, directed evolution and gene editing techniques. Proposals should work with plants or algae and deal with any of the biological components underlying the diversity of photosynthesis. Proposals can involve new strategies to engineer the chloroplast genome, new strategies to engineer relevant enzymes, the development of metabolic models that contribute to a higher understanding of the properties of photosynthesis, among others. Proposals should cover at least one of the following:

- new tools improving the performance of the catalytic enzymes involved in photosynthesis;
- new tools to increase the rate of CO₂-fixation;
- engineered enzymes for novel CO₂-fixation pathways.

Proposals should include **Social Sciences and Humanities (SSH)** elements regarding the technologies used and the **environmental and socio-economic impact** of the expected output.



ICT

ICT-24-2018-2019: Next Generation Internet - An Open Internet Initiative

Involving today's best Internet innovators to address technological opportunities arising from cross-links and advances in various research fields ranging from network infrastructures to platforms, **from application domains to social innovation**. Beyond research, the scope includes validation and testing of market traction with minimum viable products and services, of **new economic, mobility and social models, and involves users and market actors at an early stage**. Multi-disciplinary approaches are encouraged when relevant. Eventually this initiative should influence Internet governance and policies.

Proposals should address only one of these sub-topics.

- **i) Privacy and trust enhancing technologies:** as sensors, objects, devices, AI-based algorithms, etc., are incorporated in our digital environment, develop robust and easy to use technologies to help users increase trust and achieve greater control when sharing their personal data, attributes and information.
- **ii) Decentralized data governance:** leveraging on distributed open hardware and software ecosystems based on blockchains, distributed ledger technology, open data and peer-to-peer technologies. **Attention should be paid to ethical, legal and privacy issues, as well as to the concepts of autonomy, data sovereignty and ownership, values and regulations.**



ICT

ICT-32-2018: STARTS – The Arts stimulating innovation

Keywords: arts to help creating a better relation between technology and human; stimulate human-centred innovation; solve industry and societal problems. Unconventional thinking. Realise unexpected solutions via artistic exploration.

Pilots: 1) human-centred environments (digital objects; IoT; city, home and mobility issues). 2) urban manufacturing – to revive social, ecological and economic urban space. Annex K (cascade grants).

Engage industry, technology, end-users, and artists.

Stay informed

Via Net4Society's:

- Website:
www.net4society.eu

- Social networks



- Newsletters:
 - * ISSUES e-magazine
 - * e-newsletter



The screenshot shows the Net4Society website homepage. The header features the Net4Society logo and a navigation bar with links: Home, Contact, Sitemap, Privacy, Imprint. A search bar is located on the right. The main content area is divided into several sections:

- Home**: A large green box with the title "Net4Society - a network of National Contact Points (NCPs) in Horizon 2020". Below the title, it states: "Net4Society is the international network of National Contact Points for the Societal Challenge 6 ('Europe in a changing world: inclusive, innovative and reflective societies') in Horizon 2020. National Contact Points (NCPs) are set up to guide researchers in their quest for securing EU funding."
- Partner Countries**: A section with a map of Europe and the text "PARTNER COUNTRIES".
- Documents**: A section titled "DOCUMENTS" featuring a link to "Net4Society Project flyer [PDF - 647.1 kB]".
- Links**: A section titled "LINKS" featuring a link to "Newsletter and ISSUES magazine".
- Highlights**: A section titled "HIGHLIGHTS" featuring a link to "High-level conference: 'Trust - European Research Co-creating Resilient Societies'" dated "29.10.2015 - 30.10.2015 | BRUSSELS, BELGIUM".

On the left side of the homepage, there is a vertical menu with links: Home, News, About the Project, Research Directory, Partner Search Support, Horizon 2020 Call Information, Other SSH Funding Opportunities, SSH Events, Increasing SSH Visibility, SSH Embedding in H2020, Library and Links, Newsletters, and Login for SC6 NCPs. At the bottom left, there is a European Union flag and text stating: "This project is funded by the European Union under Horizon 2020. NET4SOCIETY is a Horizon 2020 project funded by the EUROPEAN UNION. This publication reflects only the author's views - the Community is not liable for any use that may be made of the information contained therein."

Dal topic al progetto

Structure of the project

Objectives
WHY?

- Objectives, (NOT results!)

Define results
WHAT?

- Results (measurable “deliverables”)

Plan activities
WHEN?

- Work Packages, Gantt chart, Pert chart, etc.

Responsibilities
WHO?

- Each partner = role and responsibility

Resources
HOW MUCH?

- to activities and partners

YOUNG-3-2015: Lifelong learning for young adults: better policies for growth and inclusion in Europe

Specific challenge: It is obvious that investing appropriately in lifelong learning will contribute to overcoming the economic and social crisis and meeting the Europe 2020 targets on employment, poverty reduction, education, sustainability, innovation. The need and markets for adult education (after initial education and training) are thus likely to rise in the coming years. However, despite sustained attention over the years, adult education in Europe remains inadequate. Firstly, it is now well documented that those who are more in need of adult education, such as young, unemployed, low skilled, disabled and vulnerable workers, actually benefit less from adult education opportunities than other more advantaged groups. Secondly, the costs of adult education are footed largely by enterprises and individuals/families while the public resources invested are largely less than the private ones: this fragmentation actually shows the persistent weakness and ineffectiveness of adult education policies.

In this context, it is important to review thoroughly the situation of adult education in Europe and look for ways to take the most out of the numerous initiatives taken by a large number of often isolated actors. Such policy and programme learning should as a priority address young people, in particular those with low levels of basic and functional literacy, those not in education or training or those in situations of near social exclusion, who could be helped much more effectively if adequate adult education policies were designed.

Scope: The research will address adult education in general (for all ages), with a specific focus on young adults and vulnerable groups (from an indicative age of 18 and after leaving initial education and training) after entry into working life.. It will consider the complementarity between public policies and dynamics of private markets in the EU market and will analyse actors, dynamics, trends, mismatches and overlaps. A historical perspective on lifelong learning (e.g. in the 19th century urban areas) will add to a comprehensive analysis.

The research will identify successful programmes which are demonstrating to improve learning outcomes, particularly those reaching out to young adults at risk of social exclusion and other vulnerable groups, and address their transferability to other countries/regions. Diversity issues (gender, culture, ethnicity, language etc.) should be considered as well.

The research will also address the learning potential and innovation ability in workplaces (organisational models that favour innovation ability and innovative oriented training) and the effectiveness of learning actions.

The action should help to set-up a cooperation mechanism between the various agencies doing research and collecting data at international and European level for developing synergies and avoiding overlaps. It will reflect on existing taxonomies and indicators and on their appropriateness to sustain European strategies. It will investigate the feasibility and possibly

develop an Intelligent Decision Support System (policy making modelling) for simplifying the access to information and support policy making in the different phases of the policy cycle. It will develop a systematic impact analysis of adult and continuing education policies linking it to forecasts for demand of skills in the future.

The Commission considers that proposals requesting a contribution from the EU of between EUR 1.5 and 2.5 million would allow this specific challenge to be addressed appropriately. Nonetheless, this does not preclude submission and selection of proposals requesting other amounts.

Expected impact: The research will harvest the potential of existing and generate new scientific knowledge in order to create synergies and cooperation amongst the main international and European actors collecting data and doing research in the field in order to compare and analyse adult education across Europe.

An 'Intelligent Decision Information System' will facilitate the access to scientific evidence for policy making so to support them in correcting the distortion of the adult education and continuing training market, show how to reduce barriers that hamper access to opportunities for various levels of population and locations, identify appropriate financial measures for supporting individuals and companies, ensuring an effective and fair distribution of resources, reduce mismanagement and corruption. The analysis of the past and current policies impact will be linked to forecasts for demand of skills in the future.

The research will advance knowledge on specific aspects linked to adult education such as specific policies and programmes for young people that have demonstrated an improvement of their labour insertion and reduced their risk of social exclusion, organisational models encouraging innovation in the companies, application of various psychological and behavioural sciences outcomes to adult education, transmission of skills and knowledge between workers, informal learning and the efficiency of private markets. In essence knowledge gained will be useful to reduce the deprived situation of most vulnerable groups that are normally less involved in adult education.

Type of action: Research and innovation actions

The conditions for this topic are provided at the end of this call and in the General Annexes.

Dal topic al progetto

Specific Challenge

Obiettivo
generale

Scope

Obiettivi specifici

Come li raggiungo?
Pianificare le attività
->
Work package

Risultati -> Deliverable
(modello, report, eventi, tecnologia,
website, questionario, ..)

Expected impact

Risultati attesi di
breve e/o lungo
periodo

Raccomandazioni per i policy maker, report
su analisi di un fenomeno, ...

IL CONCEPIMENTO DELL'IDEA

Lo studio del bando

REFLECTIVE-3-2015: European cohesion, regional and urban policies and the perceptions of Europe

Specific challenge: Regional policies were the second largest part of the EU budget in the period of 2007-2013 and they will maintain a large budget share in the new multiannual financial framework as well. The contribution of these policies towards European economic, social and territorial cohesion has been constantly monitored and critically analysed in recent years. **On the contrary, our knowledge is much less significant on the contribution of this vast European policy to a positive identification with the European project as such or to the emergence of a valued, popular sense of European identity among the beneficiary population.**

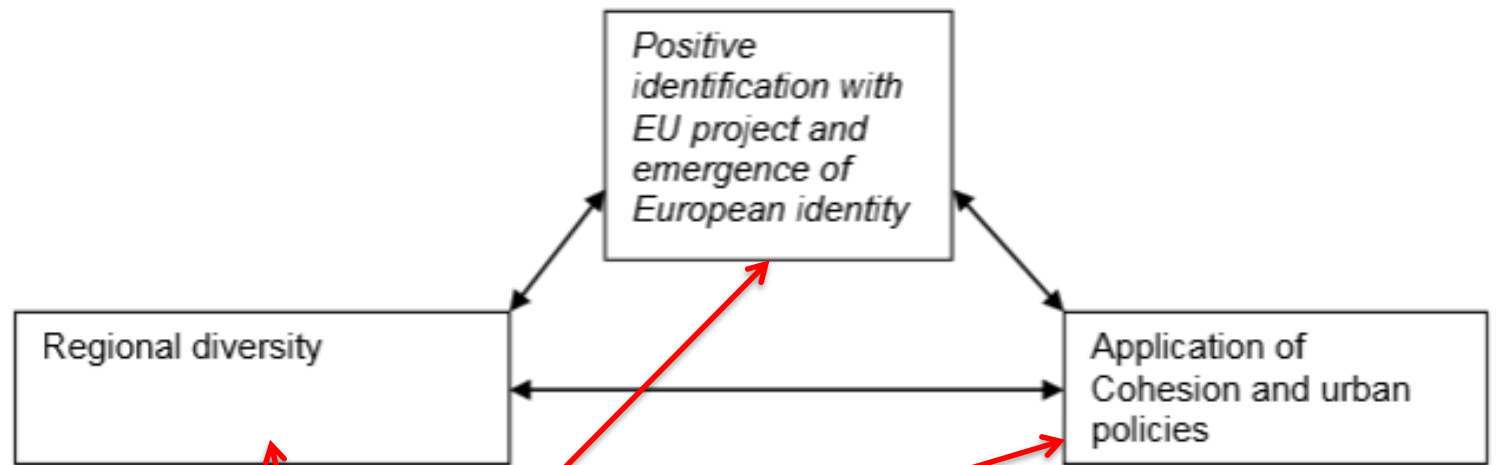
Europe's regions are very diverse in terms of institutional history, distinct cultural (or even linguistic, ethnic or national) identities as well as administrative and governance functions. **In some regions, indigenous peoples' issues and demands are affected and challenged by European policies.** In the

STUDIO ACCURATO DELLE CALL

context of a perceived democratic deficit of the EU and bearing in mind the importance of local practices and mental representations in the construction of identities, it is highly important to analyse the triangular relationship between European regions, the European framework for the application of cohesion, regional and urban policies (including the notion of smart specialisation and the role of creativity in modern development policies) and the impact of European regional policies on a positive identification with the European construction.

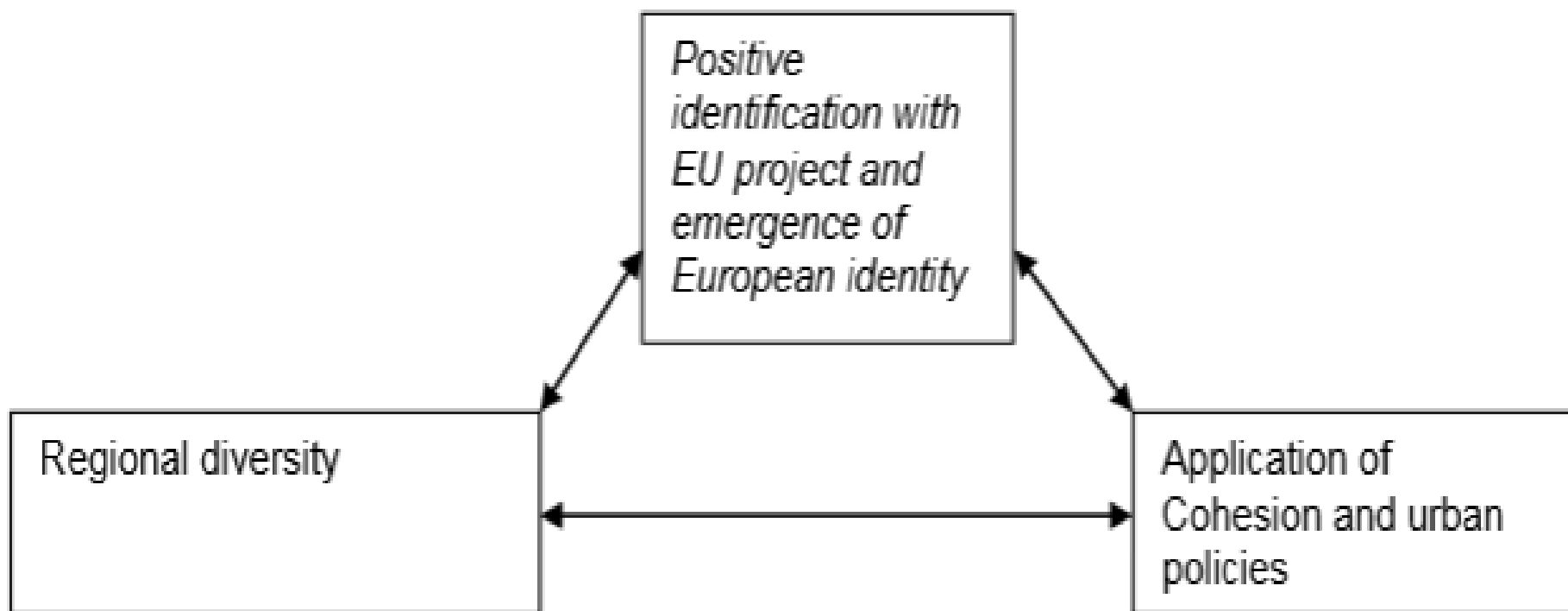
Scope: The tailor-made, multidisciplinary, geographically balanced and comparative research will aim at exploring the interplay between (1) European regions with highly different administrative roles, civil participation, history, culture, creativity and identity; (2) the application of cohesion, regional and urban policies in the EU, including the subsidiarity aspects and decentralised decision-making and the aims of smart specialisation and (3) the contribution of regional policies to a positive identification with the value-based European integration project by European societies. In analysing the potential of EU cohesion, regional and urban policies for fostering a more positive identification with the European project, it is crucial to also incorporate the interplay with regional policy regulatory implementation experiences, both positive and negative. Based on a critical review and assessment of the existing conceptual and methodological background supported by modern creative practice, the research should include a comparative analysis of genuine and innovative case studies from Member States with different current and historical territorial administrative frameworks and regional identities in order to identify the channels by which European regional policies impact the perception of Europe by its citizens. Finally, the research activities should consider the impact and effectiveness of communication efforts related to EU-financed regional development projects.

The Commission considers that proposals requesting a contribution from the EU of between EUR 1.5 and 2.5 million would allow this specific challenge to be addressed appropriately. Nonetheless, this does not preclude submission and selection of proposals requesting other amounts.



context of a perceived democratic deficit of the EU and bearing in mind the importance of local practices and mental representations in the construction of identities, it is highly important to analyse the triangular relationship between European regions, the European framework for the application of cohesion, regional and urban policies (including the notion of smart specialisation and the role of creativity in modern development policies) and the impact of European regional policies on a positive identification with the European construction.

IL CONCEPIMENTO DELL'IDEA



Proposals should

- assess and develop appropriate **methodologies** and
 - perform comparative qualitative/participative and / **statistical analyses** at national and EU level
-
- to map the various forms of cultural engagement,
 - assess the role of cultural participation as a source of wellbeing, and
 - identify the benefits of cultural engagement across population segments.

→ WP ANALISI
STATISTICA

The **historical** role of culture in **integrating** and **dividing** Europe should be addressed with a view to learning more about the specific conditions in which **cultural integration** occurs.

The nature and degree of the contributions stemming from

- cultural engagement to
 - intercultural dialogue,
 - cultural identity and community building
- should also be assessed.

→ WP Sociologico?

On the basis of innovative approaches and a representative geographic coverage of different parts of Europe, proposals should explain **how cultural values are constructed in the age of social media, internet and television** across different socio-economic groups.

→ *WP on media studies*

They should also investigate how **urbanisation, spatial and social segregation,**

→ *WP Sociologico*

gender and rising diversity in European societies influence the formation of cultural values.

→ *Integra l'approccio sociologico prima*

In addition, proposals should assess the goals, strategies and effectiveness of **cultural policies** and **institutions** in evoking, transferring and maintaining cultural value, as well as addressing issues such as diversity and inclusion.

→ *WP Policy*

WP 1 Management

WP * Dissemination & Communication

WP1
Management

WP2
Mapping exercise

WP3
Literature

WP4
Formal & Informal education

WP5
Impact

WP*
Dissemination

- **Chi** svolge questa parte del lavoro?
 - Partner A (leader); Partner B; Partner N...
 - Quanto **tempo** impiegherà il Partner A per svolgere il proprio compito?
 - Quante persone impiegherà?
- In che modo svolgerà il lavoro?
- A che mese comincia tale parte del lavoro?
- A che mese finisce tale parte del lavoro?
- Quale sarà il **risultato** intermedio e finale (output)?
 - Quali i **deliverables**? (resoconti sui risultati)
 - **Milestones**? (momenti in cui si fa il punto sullo stato di avanzamento verso l'obiettivo finale, e si possono prendere decisioni cruciali).
- Sono necessari dei **viaggi**?
 - Quanti?
 - Quante persone viaggiano?

Proposal: part B

Cover page: Title of proposal + List of participants

TEMPLATE PART 1-3

1: Excellence

- 1.1 Objectives
- 1.2 Relation to work programme
- 1.3 Concept and methodology
- 1.4 Ambition

2. Impact

- 2.1 Expected impacts
- 2.2 Measures to maximize impact
 - a) Dissemination and exploitation of results
 - b) Communication activities

3. Implementation

- 3.1 Work plan – work packages, deliverables
- 3.2 Management structure, milestones and procedures
- 3.3 Consortium as a whole
- 3.4 Resources to be committed

TEMPLATE PART 4-5

4. Individual participants

5. Ethics and Security

Number of pages: 70 pp for RIA/IA | 50 pp for CSA

Writing the proposal: part B

1: Excellence

- 1.1 Objectives
- 1.2 Relation to work programme
- 1.3 Concept and approach
- 1.4 Ambition

- Soluzione al problema del committente
- Ancora la soluzione nel panorama europeo
- Illustro la soluzione proposta
 - ipotesi
 - Metodologia
 - tesi

2. Impact

- 2.1 Expected impacts
- 2.2 Misure to maximise impact
 - a) Dissemination and exploitation of results
 - b) Communication activities

3. Implementation

- 3.1 Work plan – work packages, deliverables and milestones
- 3.2 Management structure and procedures
- 3.3 Consortium as a whole
- 3.4 Resources to be committed

4. Individual participants

Writing the proposal: part B

1: Excellence

- 1.1 Objectives
- 1.2 Relation to work programme
- 1.3 Concept and approach
- 1.4 Ambition

2. Impact

- 2.1 Expected impacts
- 2.2 Measures to maximise impact
 - a) Dissemination and exploitation of results
 - b) Communication activities

- in che modo la tua soluzione cambierà l'Europa?
- Come avverrà il passaggio dal cassetto al pubblico?
- Come diffonderai l'informazione?

3. Implementation

- 3.1 Work plan – work packages, deliverables and milestones
- 3.2 Management structure and procedures
- 3.3 Consortium as a whole
- 3.4 Resources to be committed

4. Individual participants

Writing the proposal: part B

1: Excellence

- 1.1 Objectives
- 1.2 Relation to work programme
- 1.3 Concept and approach
- 1.4 Ambition

2. Impact

- 2.1 Expected impacts
- 2.2 Measures to maximise impact
 - a) Dissemination and exploitation of results
 - b) Communication activities

- come realizzerai la soluzione proposta?
- Quante persone saranno coinvolte?
- Quanto tempo impiegherai?
- Quanti soldi spenderai?
- Cosa otterrai come risultato?
- In che modo?

3. Implementation

- 3.1 Work plan – work packages, deliverables and milestones
- 3.2 Management structure and procedures
- 3.3 Consortium as a whole
- 3.4 Resources to be committed

4. Individual participants

Writing the proposal: part B

1: Excellence

- 1.1 Objectives
- 1.2 Relation to work programme
- 1.3 Concept and approach
- 1.4 Ambition

2. Impact

- 2.1 Expected impacts
- 2.2 Measures to maximise impact
 - a) Dissemination and exploitation of results
 - b) Communication activities

3. Implementation

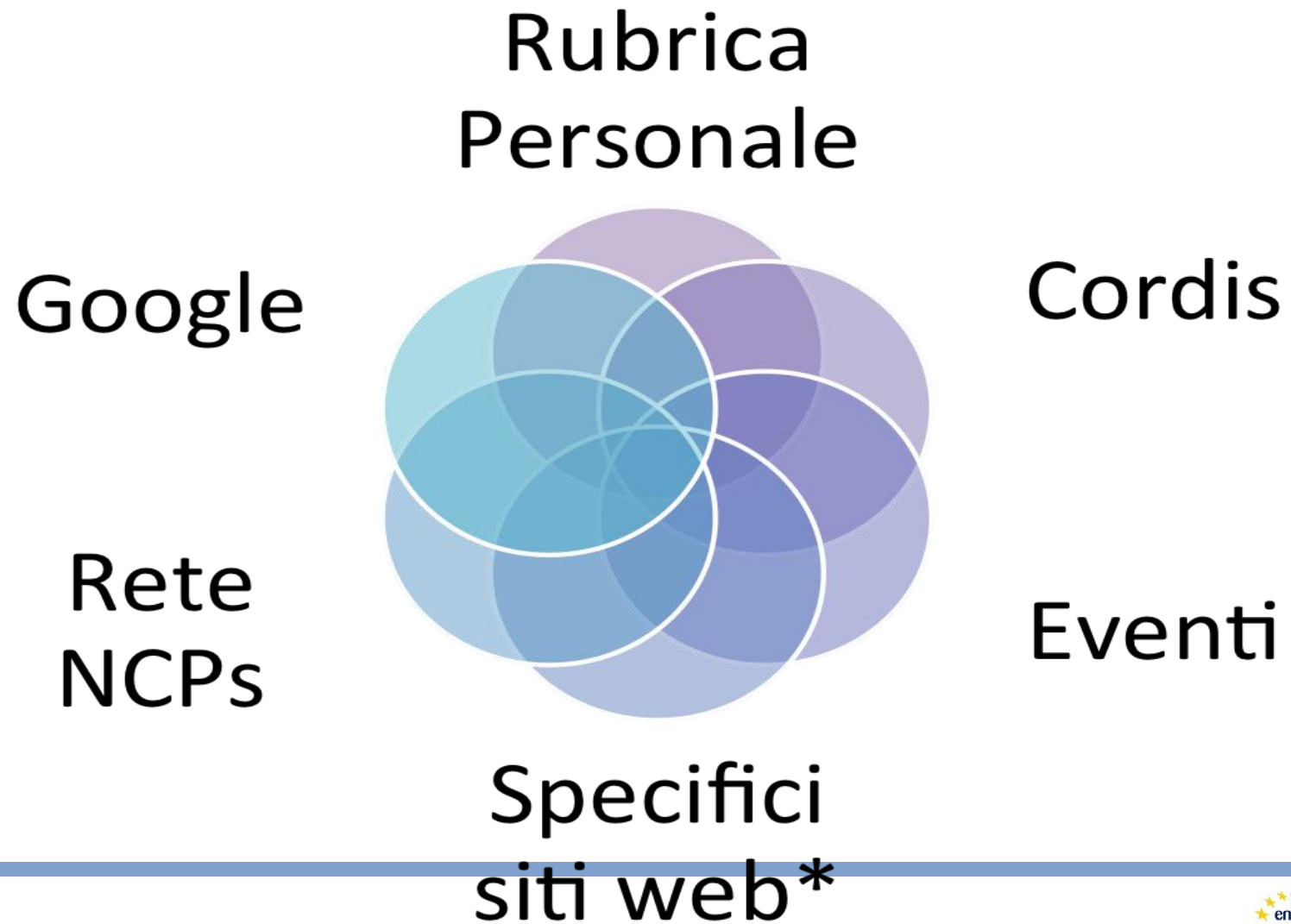
- 3.1 Work plan – work packages, deliverables and milestones
- 3.2 Management structure and procedures
- 3.3 Consortium as a whole
- 3.4 Resources to be committed

4. Individual participants

- chi siete?
- Siete competenti come singoli partner?
- Come partenariato, avete tutte le competenze necessarie?


Costruzione del partenariato

Where do we look for partners?



NCP Partner Search Tools in H2020

- CORDIS (Community Research and Development Information System)
- NMPTeAm3 (NMP) – www.nmp-partnersearch.eu
- Ideal-ist (ICT) – www.ideal-ist.eu/partner-search/pssearch
- Cosmos 2020 (Space) – <http://ncp-space.net/space-research/thematic-information/partner-search>
- Fit4health2.0 (SC1) – <http://mm.fitforhealth.eu>
- BioHorizon (SC2) – www.ncp-biohorizon.net/profiles
- C-Energy 2020 (SC3) – www.partnersearch.c-energy2020.eu
- ETNA2020 (SC4) – www.transport-ncps.net/index.php?option=com_k2&view=item&layout=item&id=400&Itemid=370
- NCPs-CARE (SC5) – <http://partnersearch.ncps-care.eu/#>
- Net4Society (SC6) – www.net4society.eu/public/pss.php
- SiS.net2 (SWAFS) – www.sisnetwork.eu/about/partner-search

 **New Events** - most recently added events appear first in the feed. There is also a feed for past events.

There are lots more events (in the area of molecular life sciences) in the EMBO calendar

Suggest an event

If you would like an event to be listed in the calendar, you can suggest an event by filling in the form.

Please note that it must be related to the Research and Innovation activities of the European Union.

You can use the same form to request a change to an existing event.

Events by theme

ALL

Bioeconomy

Coal and Steel (RECS)

Sei in *Eventi* » 2016 » I semestre » SwafS Brokerage event



Science with and for Society: Brokerage event 2016

Bruxelles, 3 marzo 2016
Management Centre Europe

Organizzato da: SiS.net2, rete dei Punti di Contatto Nazionali di Science with and for Society

Il 3 marzo si terrà a Bruxelles il brokerage event con incontri bilaterali pre-organizzati al fine di facilitare la creazione di partenariati e collaborazioni internazionali per il Programma *Science with and for Society* di Horizon

2020, prossimi bandi 2016.

La partecipazione al brokerage event è gratuita, previa registrazione sul sito ufficiale dell'evento.

Il principale obiettivo dell'evento è quello di fornire ai partecipanti informazioni dirette da parte della Commissione europea sui bandi 2016 del programma *Science with and for Society* e di riunire tutti gli stakeholder (università, centri di ricerca, PMI, enti pubblici ecc.) per individuare potenziali partner per presentare congiuntamente progetti di ricerca alla scadenza del **30 agosto 2016**.

Durante l'evento i partecipanti riceveranno informazioni sulle seguenti aree di ricerca:

- Science Education
- Gender
- Public Engagement
- Open Access and Ethics

Per ulteriori informazioni: <https://www.b2match.eu/horizon-swafs2016/>

New partner search in Participant Portal

Partner Search

3

Organisations are looking for collaborating partners for this topic

[VIEW/EDIT PARTNER SEARCH](#)

LEARs, Account Administrators or self-registrants can publish partner requests for open and forthcoming topics after logging into the Participant Portal.

PROPOSAL WRITING TIPS

Outline your idea in one-page

Topic	
Title/ACRONYM	
Challenge to face	The aim of the proposal is to...
Objective to reach	The key research question/challenge is...
Background/short description	<ul style="list-style-type: none">• Why bother? What problem are we solving?• Is it a European priority?• Does it express an European challenge and added value?• Is the solution already available?• Where innovation lies?• Why now? What would happen if we did not do this now?• Why you? Are you the best one to do this work?
Results/impact	<ul style="list-style-type: none">• Expected results - what will come out from the project?• Who will use/re-use the results and why?• What about results exploitation after the end of the project?• What will be changed? Post-project situation• Innovation Capacity (stimulate innovation beyond the project)
Activities/phases (science part)	
Project consortium	
Duration/costs	

First-hand information

Before submitting a proposal, search the opinion of the NCP, or of some Project Officer, if you know them, regarding the relevance and coherence of your project idea.

Help the evaluators

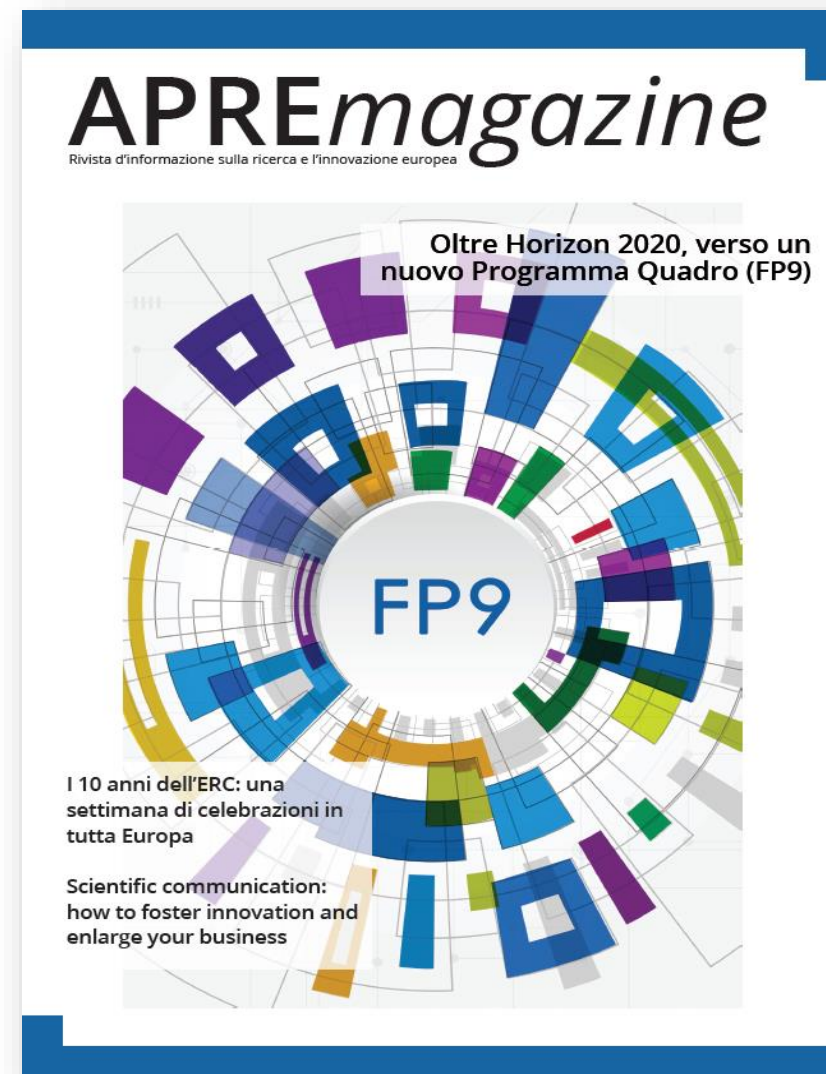
Write clearly and concisely, studying the contents' logical flow, and organising the text coherently and in an holistic way.

This is not a *scientific paper*. Is more similar to a good communication work (given the limited space)

Do not focus only on technical aspects, but also on wider societal, economic and environmental impact.

Take care of the *Abstract*

- Project officers frequently rely on the summary when choosing reviewers.
- Evaluators use the summary as a template or guide to the document. Their impression of the summary is critical.
- Abstracts also are used later to remind evaluators of the key elements of the design and of the expected outputs.
- Summaries will be made public, if the proposal is funded.





Servizio per i Soci APRE

Novembre 2016

Bando SC6- CULT-COOP
Understanding Europe - promoting the European Public and cultural space

7 8 9

14 15 16

21 22 23

24

Workshop FET OPEN
23 novembre
data da confermare

Bando SC6- ENG-GLOB
Engaging together globally

Bando SC6- CO-CREATION
for Growth and Inclusion

Workshop

APRE

2020

Science and Industries Society

CHIARA POCATERRA

Partecipanti (27)

- Ufficio APRE
- Ospitanti (1)
- Ufficio APRE
- Relatori (2)
- CHIARA POCATERRA
- Miriam Benedetta
- Partecipanti (24)
- Alessio Lorenzi UNIVR
- Chat (Tutti)

- ☐ Appuntamento **mensile** on-line
- ☐ **Novità** e appuntamenti su H2020
- ☐ Appuntamenti e **opportunità** per i Soci APRE

Excellent Science
Competitive Industries
Better Society

HORIZON 2020

the EU Framework Programme for Research and Innovation

Office APRE

Agencia per la Promozione della Ricerca Europea

augusto cramerossa

APRE

Agenzia per la Promozione della Ricerca
Europea
via Cavour, 71
00184 - Roma
www.apre.it
Tel. (+39) 06-48939993
Fax. (+39) 06-48902550

Margot Bezzi

Societal Challenge 6 Team

**"Europe in a changing world – Inclusive, Innovative and
Reflective society"**

APRE expert in SC6 and in (Digital) Social Innovation

bezzi@apre.it